

अच्छा लगाता है!

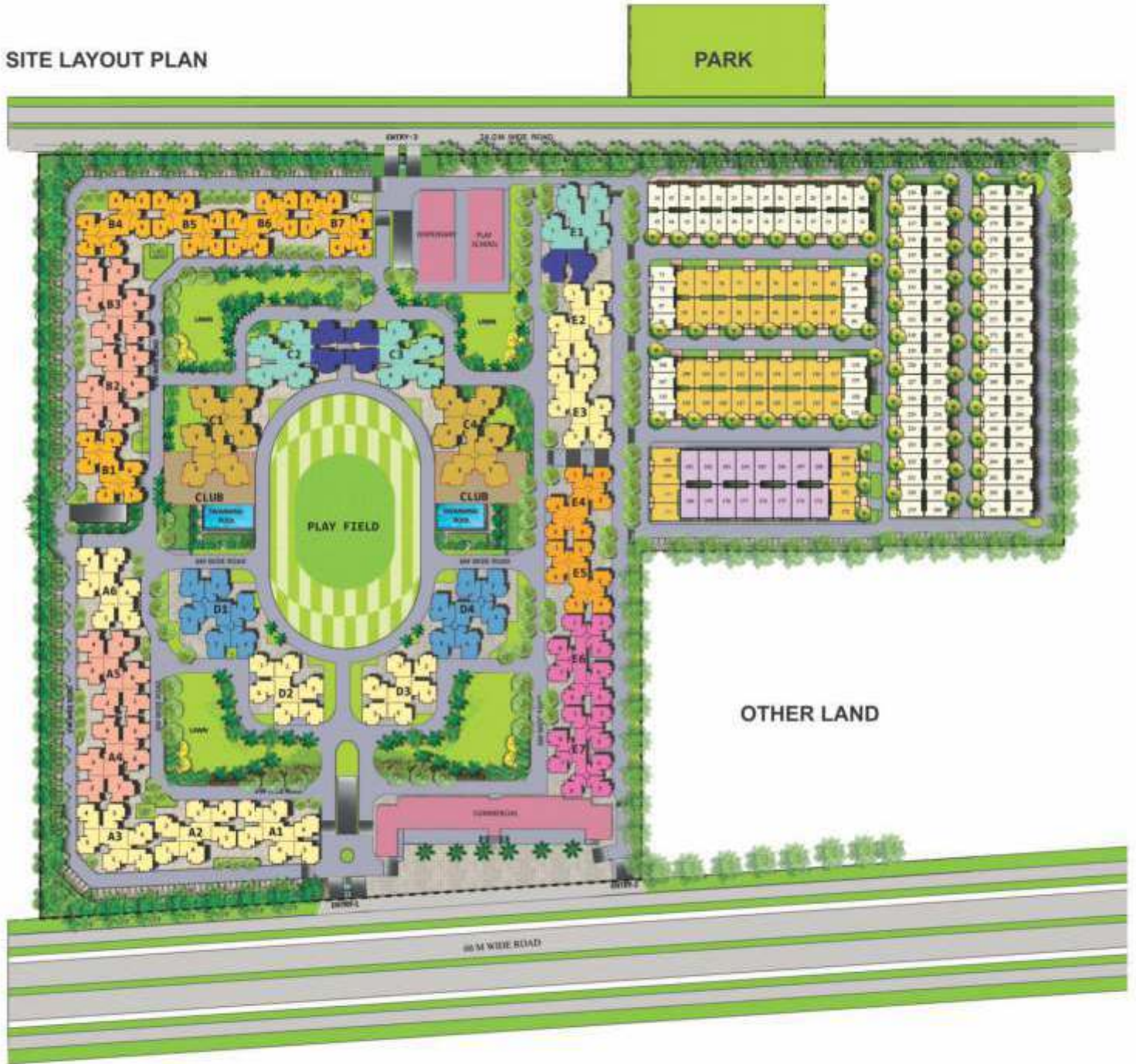
अपने परिवार को एक अच्छी जीवनशैली देना.



Spacious homes at Greater Noida (West)



SITE LAYOUT PLAN





Disclaimer: Visual representation of images and elevation shown in this brochure are purely conceptual. All plans, specifications, layouts etc. are tentative and subject to variations and modifications by the company or the competent authorities and company does not bear any legal consequences for it. The areas are approx. 1 sq. mt. = 10.764 sq.ft. (10.764 sq.ft. = 1.0 sq.mt. = 10' sq.mm.) we are RERA compliant




EXPERIENCE THE PLEASURE OF CONVENIENCE

Panchsheel Greens-II is the place filled with amenities and conveniences. Buying a home here will not just mean a shelter to live but a complete living pleasure. With world-class facilities and amenities so close by, there would never be a need to stretch out in search of more happiness.

Apart from these matchless features, the homes here offer an option of 2 and 3 bedroom apartments at the strategic location of Sector-16, Greater Noida (West). So, come and live close to happiness.

 MIG - I (915 sq.ft.)	 HIG - I (1510 sq.ft.)
 MIG - II (1105 sq.ft.)	 HIG - IA (1480 sq.ft.)
 MIG - III (1350 sq.ft.)	 HIG - II (1485 sq.ft.)
 MIG - IV (1060 sq.ft.)	 SUPER HIG - (1820 sq. ft.)

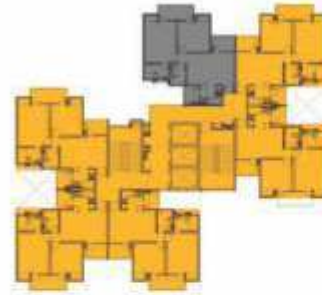
VILLA

 TYPE -A (90 sq.yd.)
 TYPE -B (120 sq.yd.)
 TYPE -C (142 sq.yd.)



RERA Regn. Nos. of Project : Phase - I, UPRERAPRJ8547 | Phase - II, UPRERAPRJ8574 | Phase - III, UPRERAPRJ8584
Phase - IV, UPRERAPRJ8592 | Phase - V, UPRERAPRJ8595
For details visit RERA website : www.up-rera.in

Disclaimer: Visual representation of images and elevation shown in this brochure are purely conceptual. All plans, specifications, layouts etc. are tentative and subject to variations and modifications by the company or the competent authorities and company does not bear any legal consequences for it. The areas are approx. 1 sq. mt. = 10.764 sq. ft. (10.764 sq. ft. = 1.0 sq. mt. = 10⁴ sq. mm.) we are RERA compliant



BLOCK
B1, B4, B5, B6,
B7, E4, E5

MIG - I / 2BHK
AREA : 915 SQ. FT.

- 2 Bedrooms
- Drawing
- Dining
- Kitchen
- 2 Toilets
- 3 Balconies

Area	Sq. Ft.	Sq. Mt.
Salable	915.00	85.00
Built-up	727.08	67.54
Carpet	572.65	53.20

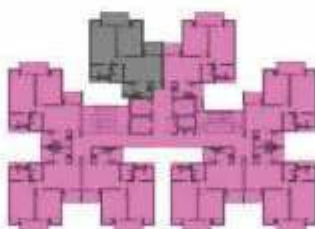
MIG - IV / 2BHK
AREA : 1060 SQ. FT.

- 2 Bedrooms
- Drawing
- Dining
- Kitchen
- 2 Toilets
- 3 Balconies

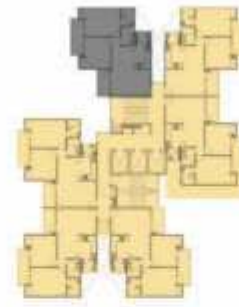
Area	Sq. Ft.	Sq. Mt.
Salable	1060.00	98.48
Built-up	770.99	71.62
Carpet	609.13	56.59



BLOCK
E6, E7



FLOOR PLANS



BLOCK
A1, A2, A3, A6;
D2, D3, E2, E3

MIG - II / 2BHK
AREA : 1105 SQ. FT.

2 Bedrooms
Drawing
Dining
Kitchen
2 Toilets
3 Balconies

Area	Sq. Ft.	Sq. Mt.
Salable	1105.00	102.66
Built-up	881.78	81.91
Carpet	697.08	64.76

MIG - III / 2BHK+STUDY
AREA : 1350 SQ. FT.

2 Bedrooms
Drawing
Dining
Study
Kitchen
2 Toilets
4 Balconies

Area	Sq. Ft.	Sq. Mt.
Salable	1350.00	125.42
Built-up	1031.18	95.79
Carpet	839.59	78.00



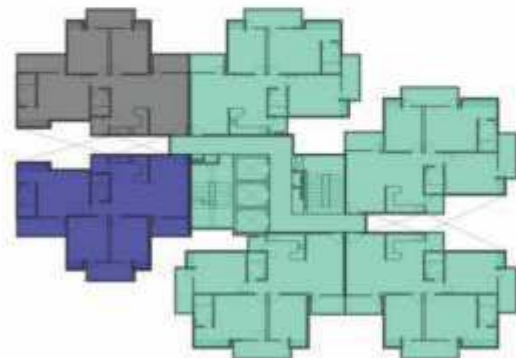
BLOCK
A4, A5, B2, B3



HIG - IA / 3BHK
AREA : 1480 SQ. FT.

- 3 Bedrooms
- Drawing
- Dining
- Kitchen
- 2 Toilets
- 4 Balconies

Area	Sq. Ft.	Sq. Mt.
Salable	1480.00	137.50
Built-up	1196.98	111.20
Carpet	957.35	88.94



BLOCK
C2, C3, E1

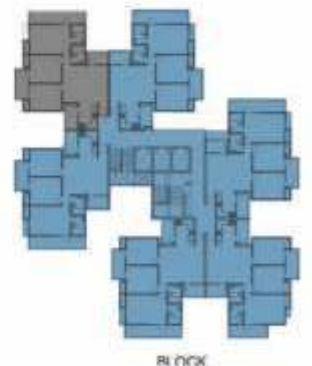


HIG - II / 3BHK
AREA : 1485 SQ. FT.

- 3 Bedrooms
- Drawing
- Dining
- Kitchen
- 2 Toilets
- 4 Balconies

Area	Sq. Ft.	Sq. Mt.
Salable	1485.00	137.96
Built-up	1183.41	109.94
Carpet	900.30	83.64

BLOCK
D1, D4

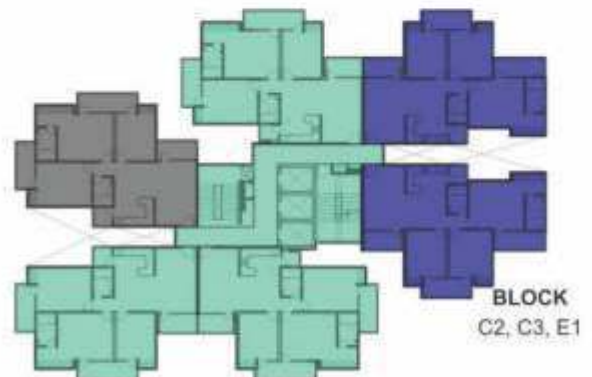




HIG - I / 3 BHK
AREA : 1510 SQ. FT.

- 3 Bedrooms
- Drawing
- Dining
- Kitchen
- 2 Toilets
- 4 Balconies

Area	Sq. Ft.	Sq. Mt.
Salable	1510.00	140.28
Built-up	1218.14	113.16
Carpet	980.39	91.08



Disclaimer: Visual representation of images and elevation shown in this brochure are purely conceptual. All plans, specifications, layouts etc. are tentative and subject to variations and modifications by the company or the competent authorities and company does not bear any legal consequences for it. The areas are approx. 1 sq. mt. = 10.764 sq.ft. (10.764 sq.ft. = 1.0 sq.mt. = 10⁴ sq.mm.) we are RERA compliant

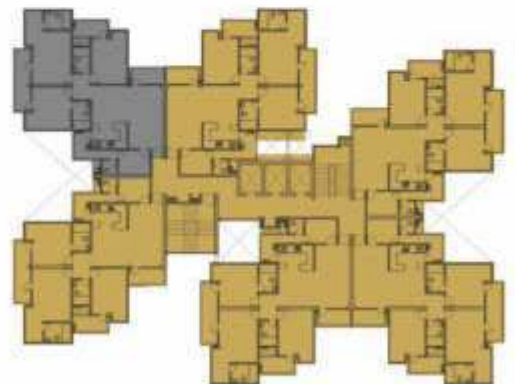
FLOOR PLAN



SUPER HIG - 3 BHK + SERV. RM.
AREA : 1820 SQ. FT.
 3 Bedrooms
 Drawing
 Dining
 Kitchen
 3 Toilets
 4 Balconies
 Servant room with toilet

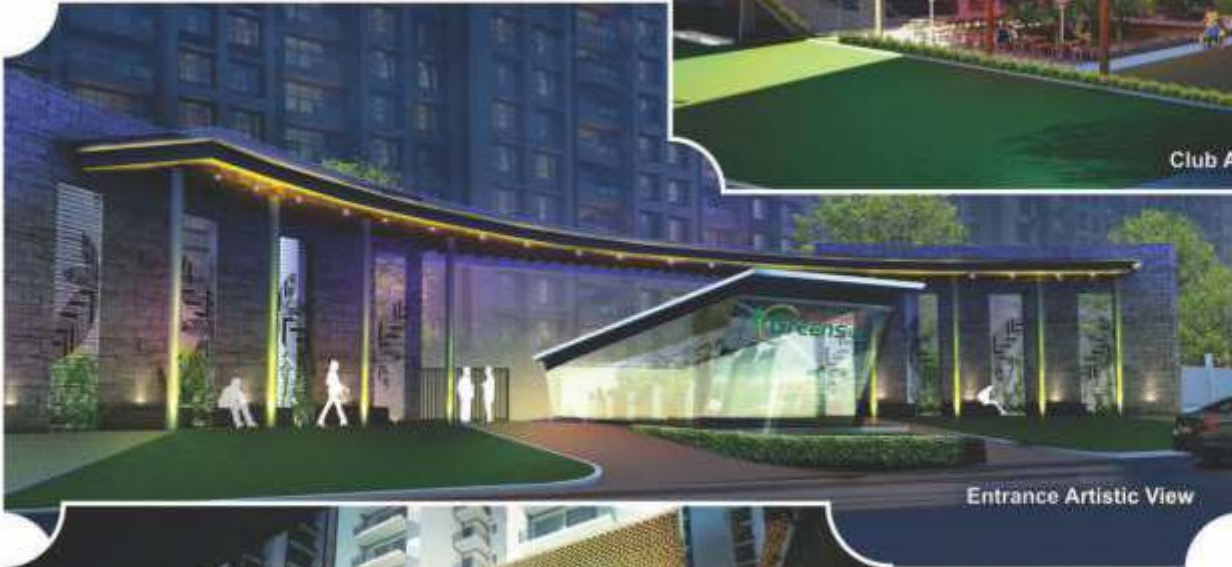
Area	Sq. Ft.	Sq. Mt.
Salable	1820.00	169.08
Built-up	1436.66	133.46
Carpet	1163.70	108.11

BLOCK
C1, C4





Club Artistic View



Entrance Artistic View



Club Artistic View

Magnificent Club

{46000 sq.ft. approx., (4273.54 sq. mtr.)}

& Entrance Gate
Prospective View

SPECIFICATIONS FOR AN AESTHETIC LIFESTYLE

Structure: Earthquake resistant RCC frame structure certified by IIT, Roorkee

External Finish : Combination of long-lasting paint.

DRAWING & DINING ROOM

Floor : Vitrified Tiles

Walls/Ceiling : Plastered and painted with pleasing shades of O.B.D

KITCHEN

Floor: Vitrified tiles,

Walls/Ceiling: Plastered and painted with pleasing shades of O.B.D.

Platform: Pre-polished granite platform with stainless steel sink.

Ceramic Glazed tiles up to 2 ft. height above counter.

MASTER BEDROOM

Floor: Vitrified tiles.

Walls/Ceiling: Plastered and painted with pleasing shades of O.B.D.

OTHER BEDROOMS

Floor : Vitrified Tiles.

Walls : Plastered and painted with pleasing shades of O.B.D.

SERVANT ROOM

Floor: Vitrified tiles.

Walls/Ceiling: Plastered and painted with pleasing shades of O.B.D

BALCONIES

Floor : Anti-skid Tiles.

TOILETS

Floor: Anti-skid Tiles. Walls: Ceramic Tiles up to door level. Fittings & Fixtures: All taps Chrome plated ISI Mark, Washbasin, W.C. in all toilets. Provision for hot & cold water.

DOORS & WINDOWS

Entrance Door : Decorative Flush door with Seasoned hardwood frame. Internal Doors : Flush door. External Doors & Windows: Glazed powder coated aluminium.

STAIRCASE

Floor: Marble flooring

Walls/Ceiling: Plastered and painted with pleasing shades of O.B.D.

ELECTRICAL

Wiring : ISI Copper concealed wires in all Bedrooms/Drawing/Dining, Toilets & Kitchen.

Switches/Sockets : Modular in all Bedrooms, Drawing/Dining, Toilets & Kitchen. Intercom/TV : Intercom facility & provision for DTH connection.

LIFT LOBBY

Floor : Vitrified Tiles.

Walls : Plastered and painted with pleasing shades of O.B.D.
Elevators : 3 high speed elevators in each tower.

Panchsheel Group. Building Future.

World-class residential & commercial projects in Noida, Greater Noida, Vaishali & Ghaziabad

Nearly 3 decades
of strong standing

7000+ Possession
given till December 2017

Thousands of
Satisfied Customers

Over 10,000 apartments
under construction

Delivered Projects



Approx. 300 families moved in

Actual View

PANCHSHEEL H4NISH

2/3 BR Homes Sec-1, Gr. Noida (W)



Approx. 500 families moved in

Actual View

PANCHSHEEL Greens

Plot No. GH-01A, Sector 18B, Gr. Noida (W)



Ready to move-in shops

Actual View

PANCHSHEEL Greenaria

Plot No. GH-01A, Sector 18B, Gr. Noida (W)



Actual View

PANCHSHEEL Wellington

Crossings Republik, Ghaziabad



Actual View

PANCHSHEEL PRIMROSE

2/3 BR Apts. Opp. Govt. Park, Anand Mandi, GZB



Actual View

PANCHSHEEL Well Bazaar

At Wellington, Crossings Republik, Ghaziabad



Actual View

PANCHSHEEL SQUARE

SHOPS OFFICE SPACES POOL COURT

Crossings Republik, Ghaziabad

Ongoing Projects



Actual View

PANCHSHEEL PRIME 390

LOW-RISE FLOORS AT PANCHSHEEL PRIME 390, GZB

Low-rise (0+4 Storied) 3 BHK apartments with 8ft. wide verandah



Actual View

PANCHSHEEL PINNACLE

Live above everything else

Plot No. GH-01A, Sector 18B, Gr. Noida (W)

High-rise apartments

Aluminium cladding used for better construction quality




Actual View

PANCHSHEEL

The name for the address

2/3 BR HOMES Sec-7B, Noida

Aluminium cladding used for better construction quality



Actual View

PANCHSHEEL Pebbles

Homes near Vaishali Metro Stn., Sector 2, Vaishali, GZB



Actual View

Panchsheel Villas

Plot No. GH-01A, Sector 16, Gr. Noida (W)



Phase-I Possession offered 1500 Flats

Actual View

PANCHSHEEL Greens-II

Plot No. GH-01A, Sector 16, Gr. Noida (W)



Artistic View

PANCHSHEEL GREENMART

Plot No. GH-01A, Sector 16, Gr. Noida (W)



Booking Open in 2 New Towers

Actual View

PANCHSHEEL Wellington

Crossings Republik, Ghaziabad

Disclaimer: Visual representation of images and elevation shown in this brochure are purely conceptual. All plans, specifications, layouts etc. are tentative and subject to variations and modifications by the company or the competent authorities and company does not bear any legal consequences for it. The areas are approx. 1 sq. mt. = 10.764 sq.ft. (10.764 sq.ft. = 1.0 sq.mt. = 10' sq.m.m.) we are RERA compliant

Location Map



LOCATION ADVANTAGES:

2 Km from Crossings Republik, NH-24 • 8 Km from Noida, Sec-71
 4 Km from Noida, Sec-121 • 11 Km from Noida City Centre Metro Station
 8.5 Km from Sai Mandir • 10 Km from Indirapuram, Ghaziabad



Project Funded By:



Panchsheel Buildtech Pvt. Ltd. (ISO 9001 : 2008 Company)

Corporate Office: H-169, Sec. 63, Noida - 201301. | Tel.: 9555-034-034 | Website.: www.panchsheelgreens.net
 Site Office: Plot No. GH-01A, Sector-16, Greater Noida (West) | E-mail: sales@panchsheelgreens.net



Sales Enq. : 9555-034-034



Disclaimer: Visual representation of images and elevation shown in this brochure are purely conceptual. All plans, specifications, layouts etc. are tentative and subject to variations and modifications by the company or the competent authorities and company does not bear any legal consequences for it. The areas are approx. 1 sq. mt. = 10.764 sq.ft. (10.764 sq.ft. = 1.0 sq.mt. = 10 sq.m.m.) we are RERA compliant

PBPL/03/2016/2000